



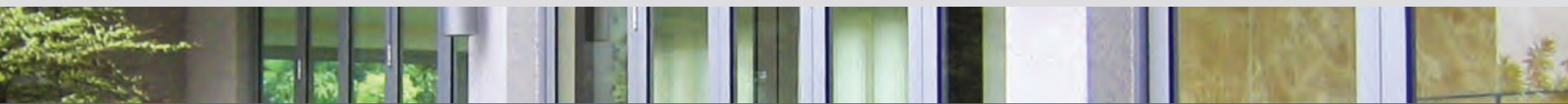
wide open

The new Series 9100 bi-fold door coming Fall 2017



ALL WEATHER
ARCHITECTURAL ALUMINUM

THE SERIES 9100 BI-FOLDING DOOR SYSTEM



Dozens of Configurations | Up to 16 Panels | Up to 12' Tall

Innovative and energy efficient, the All Weather Series 9100 bi-fold door is ideal for both residential and commercial applications. Held to the highest standards of quality and performance, the 9100 boasts liquid smooth operation, robust build quality, and a look that will evoke admiration and envy . . . especially in our massive 16 panel, 52' wide configurations.

Whether you need a simple bi-fold patio door or an entire wall that opens on your world, the 9100 is a perfect choice.

MIN MAX

Maximum # Of Doors: 8 Each Way | 16 Panels

- | Max Panel Weight: 220 lbs (each panel)
- | Min Panel Width: 24"
- | Max Panel Width: 39"
- | Min Panel Height: 79"
- | Max Panel Height: 144"
- | Door Thickness: 2 1/4"

GLAZING OPTIONS

- | 15/16" OA Insulated Glass

HARDWARE

- | Twinpoint Stainless Steel Hardware
- | Lever Lock Sets
- | Multi-Point Door Locks

FINISH OPTIONS

- | Clear Anodized, Class I
- | Bronze Anodized, Class I

RATINGS & CERTIFICATION

- | Commercial Rating

