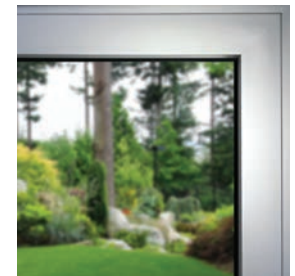




Product Specifications | Extrusion Details | Test Reports

Quality. Care. Commitment.
series 7000 doors | innovative design



Series 7000 Thermally Broken Aluminum Swing Door



Introduction

Series 7000 product line uses 6063 extruded aluminum age hardened to a T-5 rating for strength and durability. The profiles for this series are extruded as two separate parts and are then joined into a single profile using thermal struts. Polyamide bars and aluminum extrusions are attached via continuous mechanical crimping. The finished profile is now thermally broken providing both improved thermal performance as well as improved condensation resistance. We currently are using two 18mm thermal struts in the frame. The frame is 82mm (3.250") in depth and the sash is 75mm (2.837")

The Series 7000 Thermally Broken Swing Door line is available in the following finishes:

- | Class I Clear Anodized**
 - | Class I Bronze Anodized**
 - | Standard White
 - | Custom Anodized
 - | 70% Kynar Paint Color
 - | A combination of the above finishes on the Interior vs. Exterior
Before the interior and exterior profiles are joined with the thermal strut, they can be painted or anodized with separate colors for a two-toned door.
- ** Indicates Finishes In Stock.*

Acoustical Testing

Series 7000 Thermally Broken Swing Door meets the following STC performance ratings:

- | | |
|------------------|--|
| STC 36 / OITC 29 | 1/4" over 3/16" with a 1" OA |
| STC 39 / OITC 32 | 3/16" over 8.8mm with a 1" OA |
| STC 40 / OITC 32 | 3/16" over 8.8mm Lami with a 1 1/4" OA |

Thermal Testing

Series 7000 Thermally Broken Swing Door has been simulated and tested according to NFRC 100/200/500.

Construction

Corners of the frame, the sash, sidelites and transoms are assembled using a die-cast aluminum corner key for structural integrity. Corners are filled with silicone for additional reinforcement. The frame sill contains weep provisions. All surfaces to be glazed are fitted by snap bead. They are positioned directly into the channels of the aluminum profiles using a EPDM gasket that provides better air and water tightness.

Hardware

Hinges

Hinges are fabricated from extruded aluminum with non-removable, non-magnetic stainless steel hinge shaft. Hinges provide horizontal adjustment of +/- 1.00 mm (+/-0.039 in.). Hinge-installation does not require machining of profiles.

Cylinder Lock

Mortise-type with 11 stainless steel pins. A special cylinder-key profile is used to prevent the use of picks and break-in tools. The cylinder-lock has a high torsion-resistance and is rated for 50,000 cycles.

Lock

Multipoint type, reversible, and corrosion-resistant. The lock includes adjustable rolling pins, dead bolt and latch, mortise-construction with reinforced lever spring system.

Series 7000 Thermally Broken Aluminum Swing Door



Handles

Our standard handle is the Tokyo handle, available in painted black and painted grey.



Tokyo Handle

Kick Plate

A 10" kick plate can be achieved by stacking 2 bars within the sash.

Screens

Screens are not available for the Series 7000 Thermally Broken Swing Door.

Glazing

The Series 7000 Thermally Broken Swing Door offer a standard 1" OA or a 1 1/4" OA upon request.

Gaskets

All gaskets are made of EPDM. The central gasket is to form a continuous and tight seal. Pre-formed vulcanized corners are used. Central-gasket joints are cut at a 90 degree-angle and bonded to the vulcanized corners.

Installation Guidelines

- Completed frames and panels will ship as individual units to be assembled together in the field by professional installers.
- All doors must be installed in openings prepared in accordance with AAMA recommendations and the below-listed manufacturers' recommendations. *If shop drawings are required, please refer to approved shop drawings for installation.*
- Each unit must be installed level, plumb and square with a 1/4" clearance on the jambs and the header of the door.
- Remove wet plaster, mortar, stucco and cement immediately. (Note: doors should only be cleaned with mild soap and water.)
- Do not set items on the sill.
- In nail-on applications, a bead of caulking material should be applied to the inside nail-on fin just before installation to insure a water-tight seal between the building and the door.
- Any attachment screws or bolts should be sealed during the process of installation. *The Series 7000 frame is hollow so a clearance hole for the head of the fastener should be used to fasten the outer most web to the building. The head of the fastener must be sealed to the frame and the clearance hole should be filled and capped.*
- After installation is completed, building paper and stucco wire, if a stucco application, should overlap the window nail-on flange.

Series **7000** Thermally Broken Aluminum Swing Door



Care & Maintenance

- | Doors should be kept free of all dust, dirt, paint and plaster.
- | The sill should be kept clean at all times. A vacuum cleaner with a crevice attachment is recommended.
- | Doors should only be cleaned with mild soap and water.
- | **Caution:** Damage will occur to the finish and to the sealed glass unit if solvents, petroleum products, or caustic chemicals, such as acetone or paint thinner are used to clean window frames. Damage caused by this type of abuse is not covered under warranty.

Series 7000 Limited Warranty



ALUMINUM DOORS One (1) year limited warranty

Every All Weather Architectural Aluminum, Inc., door is guaranteed to meet industry standards for performance against defects in material or workmanship for a period of one (1) year. Broken glass or damage due to improper installation or abuse are not covered by this warranty. Industry standards are defined by the American Architectural Manufacturers Association (AAMA), WDMA (Window & Door Manufacturers Association) and CSA (Canadian Standards Association), (AAMA/WDMA/CSA 101/I.S.2/A440-05)

INSULATED GLASS Ten (10) year limited warranty

Every All Weather insulated glass unit is warranted for a period of ten (10) years from the date of manufacture except in the case of insulating glass containing decorative internal grids which are warranted for a period of one (1) year. All Weather warrants that under normal conditions of residential or light commercial use and service, moisture condensation, dust, and other foreign particles inside of the dead air space and/or loss of insulating value due to leakage of the unit at the sealed edges will not occur. In the event of a failed unit, All Weather will provide a replacement unit at no cost to the customer, or at its option, refund the original purchase price of said unit. This warranty applies to original units only and does not include removal or reinstallation.

WARRANTY IS SUBJECT TO THE FOLLOWING CONDITIONS AND TERMS

- | All Weather must be paid in full for the products to qualify.
- | The warranty on replacement units is limited to the remainder of the warranty period on the original units. Replacement units will be shipped F.O.B. original customer.
- | This warranty does not include removal or reinstallation.
- | All Weather will not assume liability for glass breakage or damage caused by improper glazing, All Weather windows shipped open for field glaze, improper installation, vandalism, misuse, abuse, or acts of nature including earthquake,

flood, and fire, or damage resulting from use in sloped glazing installations or improper treatment including exposure to any chemicals or substances detrimental to the insulating seal of the units; faulty building construction or design; or in conditions where water or moisture can accumulate and remain around the sealed edges of the units. This warranty does not cover single pane glass or IG units that are field glazed, regardless of glass supplier, to include All Weather supplied glass / units. Customer supplied glass is also not covered.

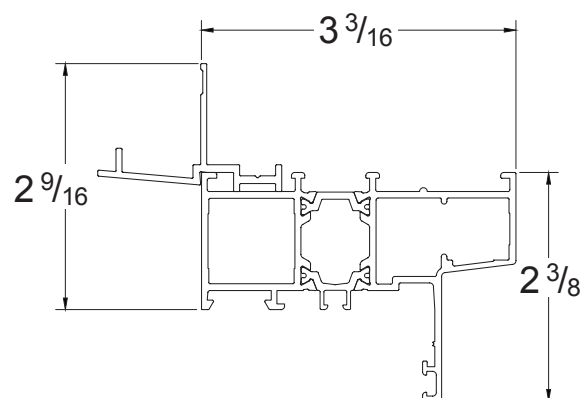
- | The warranty applies only to the original registered owner-occupant at the location where the products were originally installed and is not transferable.
- | The paint surface of any special painted material is not covered under this warranty. Warranty claims for special paint must be filed with the paint vendor and are subject to their warranty terms and conditions.
- | This warranty is void where units are installed in other than a normal residential or light commercial application or in any environment where units are exposed to excessive temperature gradients from surface to surface.

There are no warranties which extend beyond the description on the face hereof. All Weather will not be liable for any subsequent expenses involved in the removal of defective units, installation of replacement units or any other incidental or consequential damages, including but not limited to those for personal injury, arising from or alleged to have arisen from any breach of the warranty contained herein. The purchaser's exclusive remedy is limited to the legal remedies described in this warranty. All Weather makes no other warranty, either express or implied, regarding our product, its merchantability or fitness for a particular purpose. No employee representative, or dealer of All Weather is authorized to modify or change this warranty.

701 OUTSWING

NAIL-ON FRAME

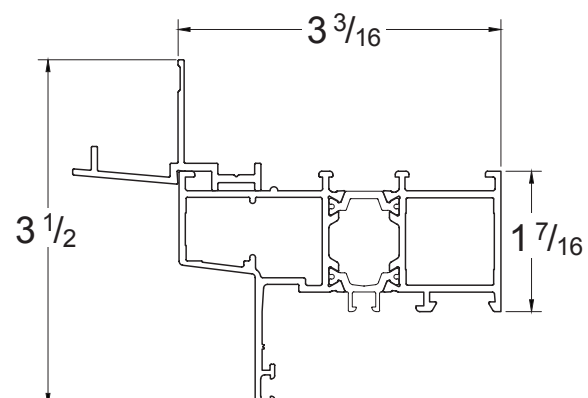
Head / Jamb Only



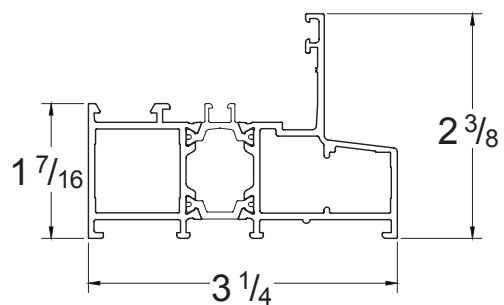
701 INSWING

NAIL-ON FRAME

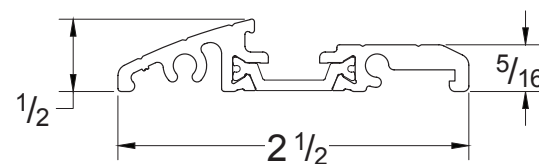
Head / Jamb Only



**702 EQUAL LEG
PERIMETER FRAME**

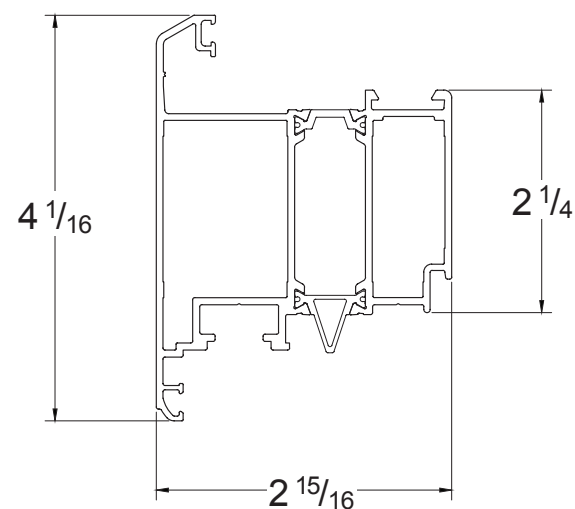
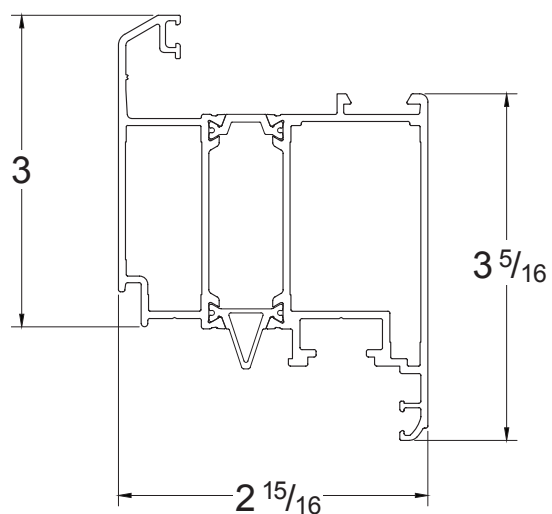


748 LOW PROFILE SILL



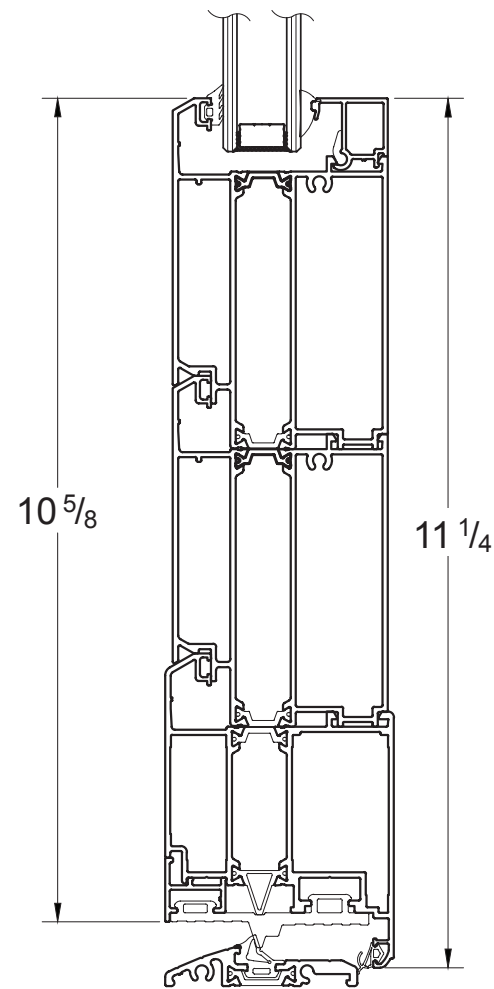
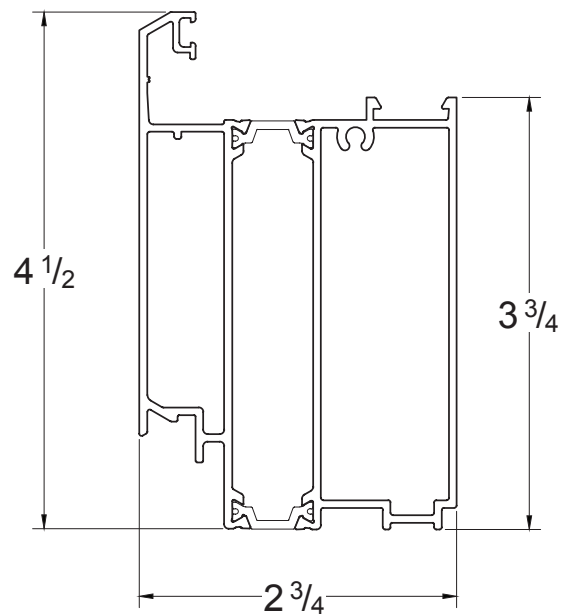
705 INSWING SASH

708 OUTSWING SASH



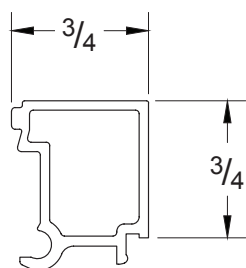
745 KICK PLATE

11 1/4"



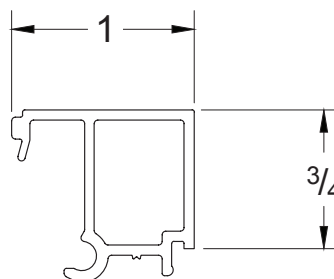
709 GLAZING BEAD

1 1/4"OA

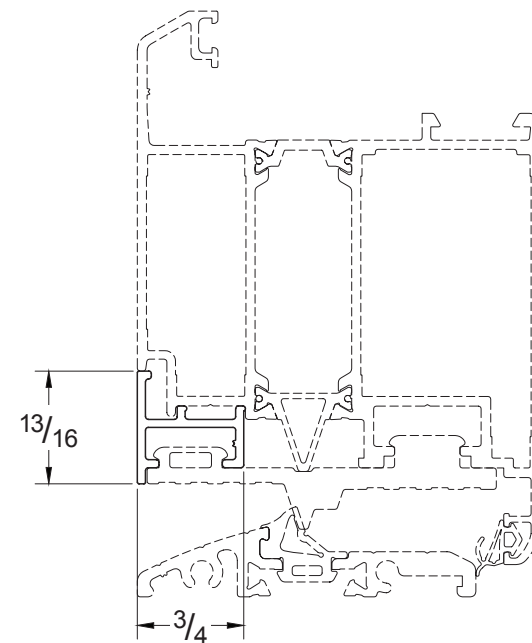


710 GLAZING BEAD

1"OA



**711 LOWERED THRESHOLD
SASH ATTACHMENT**

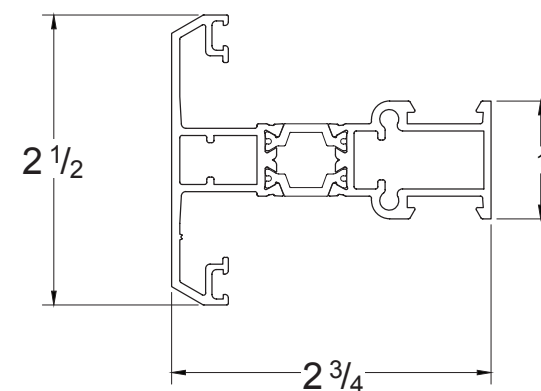
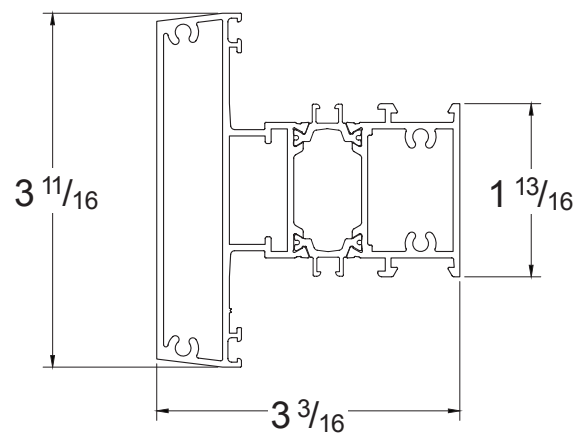
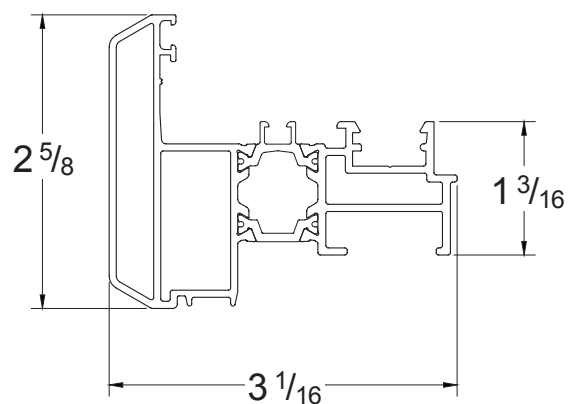


720 ASTRAGAL

732 BAR

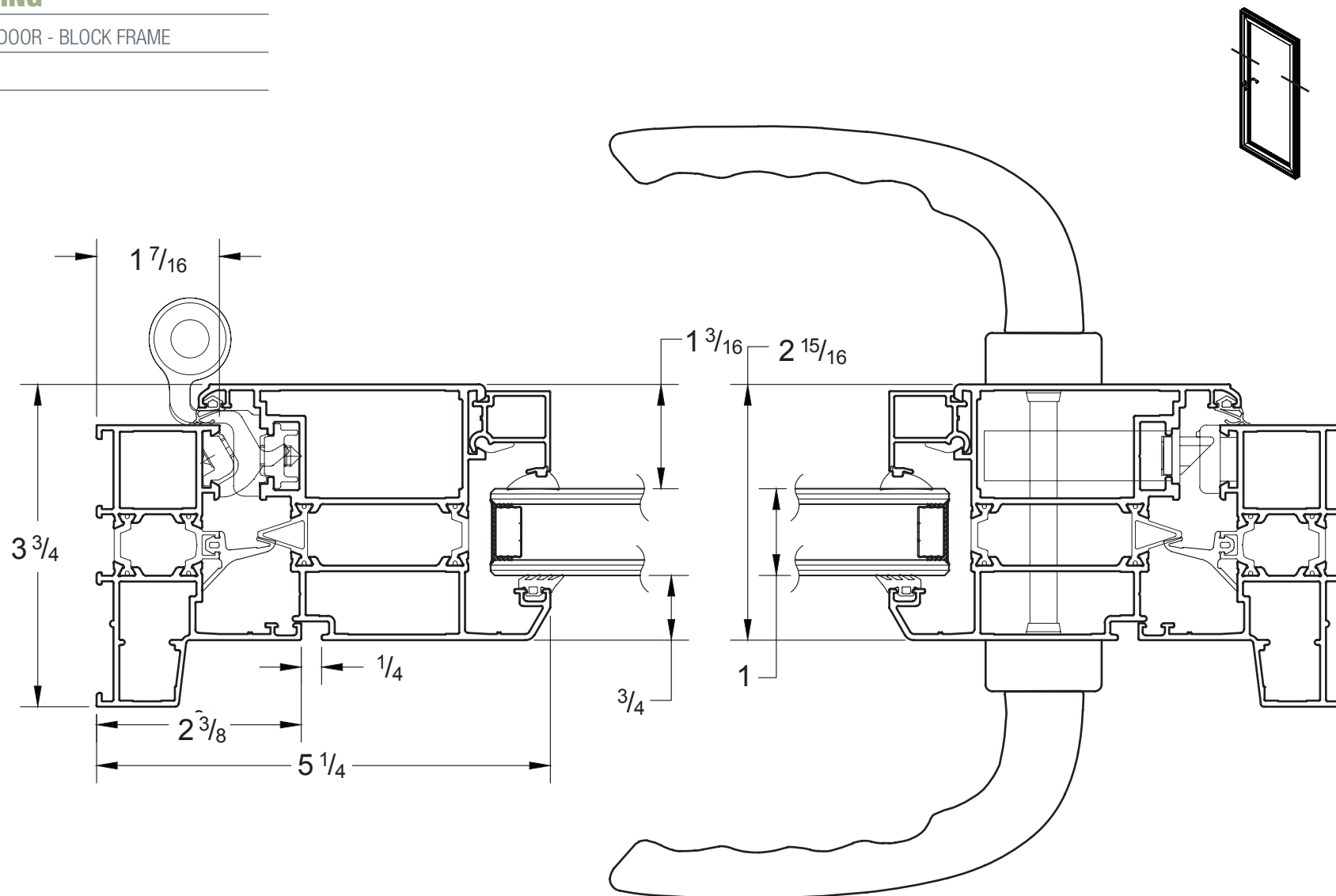
FOR SIDELITE OR TRANSOM

735 TDL



INSWING

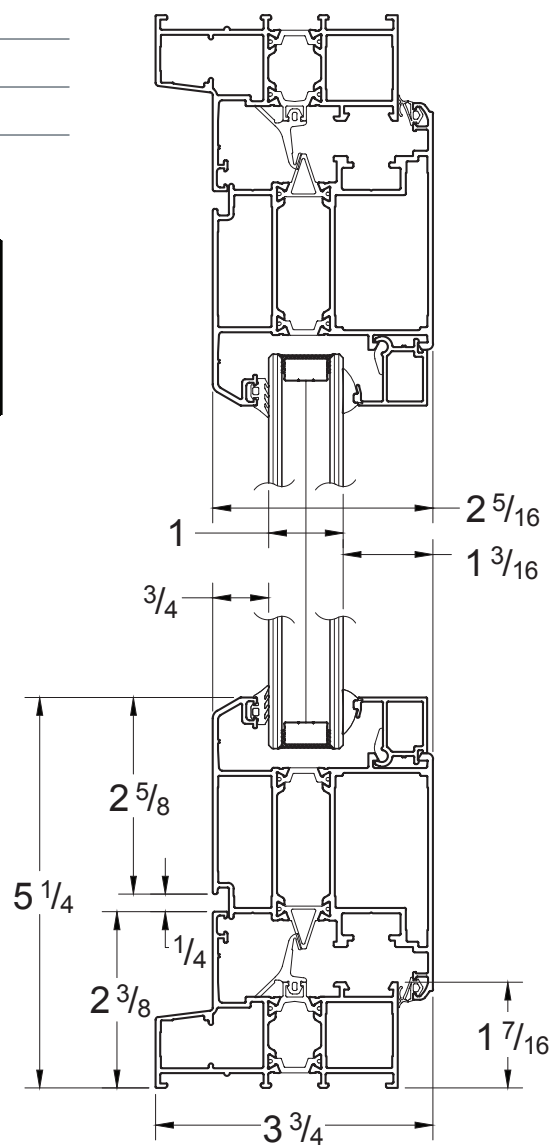
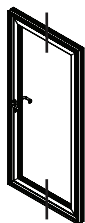
SINGLE DOOR - BLOCK FRAME



INSWING

STANDARD SILL

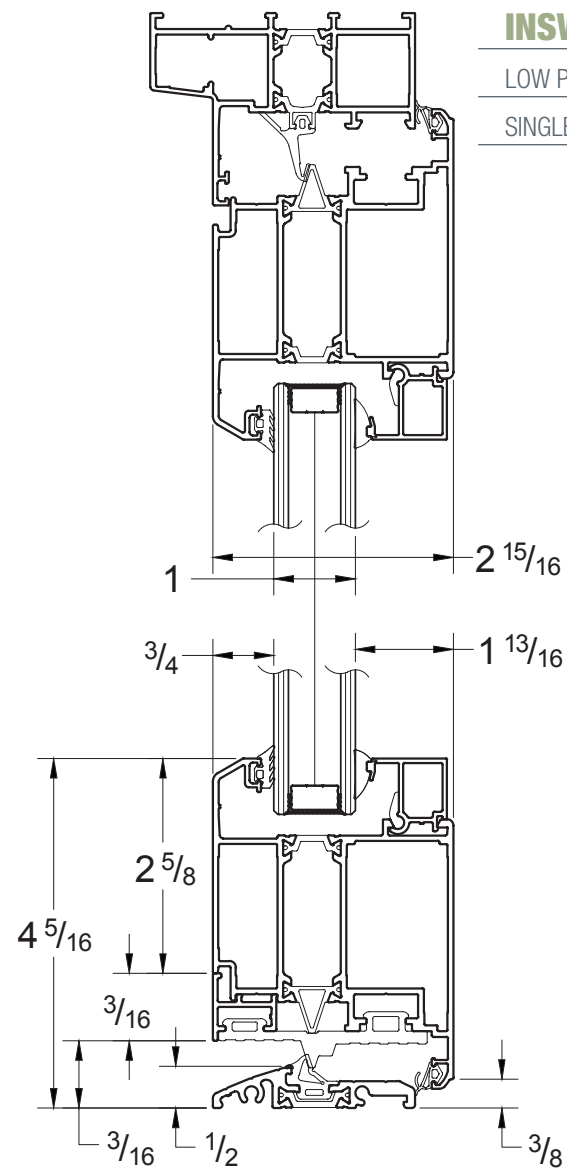
SINGLE DOOR - BLOCK FRAME



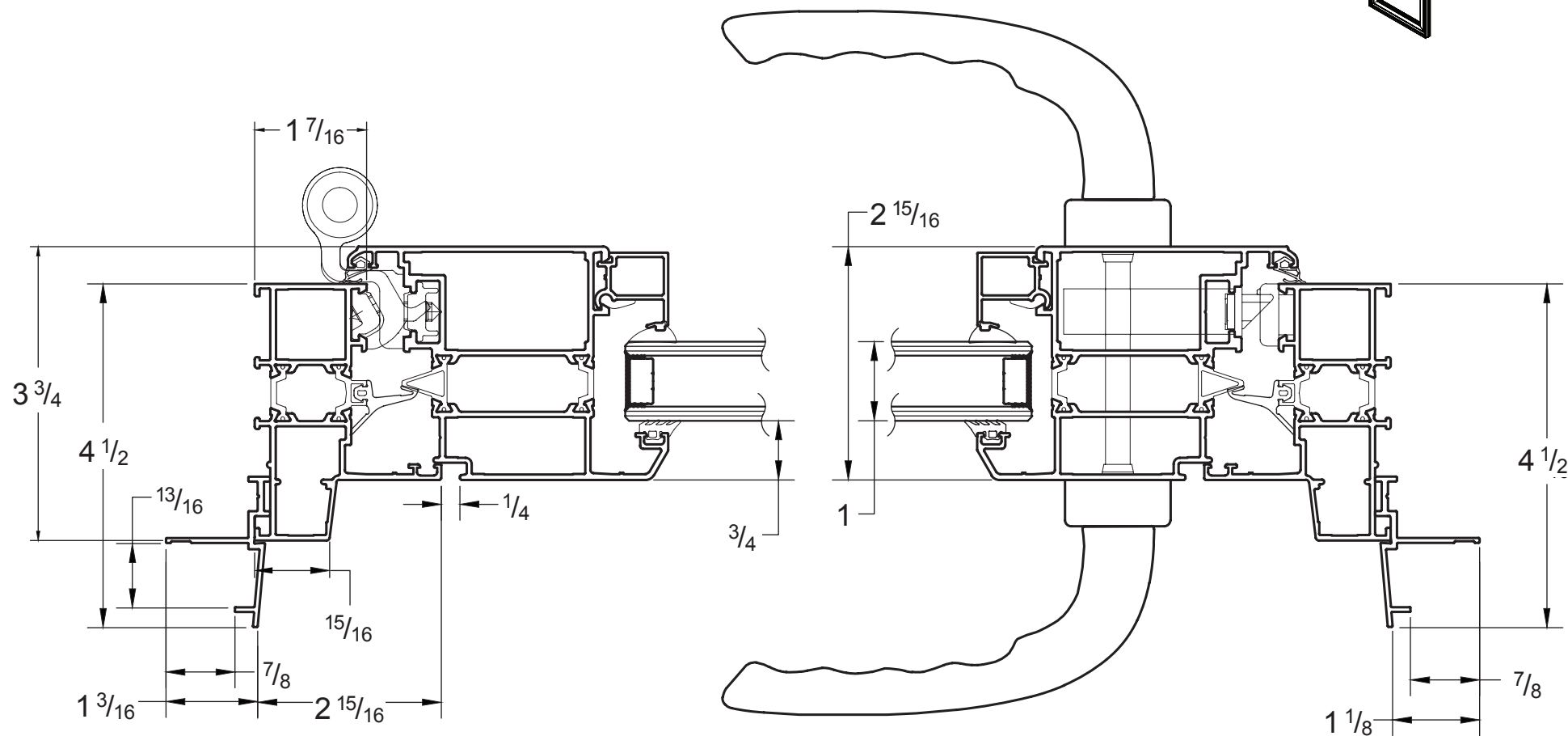
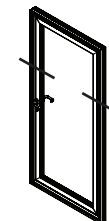
INSWING

LOW PROFILE SILL

SINGLE DOOR - BLOCK FRAME



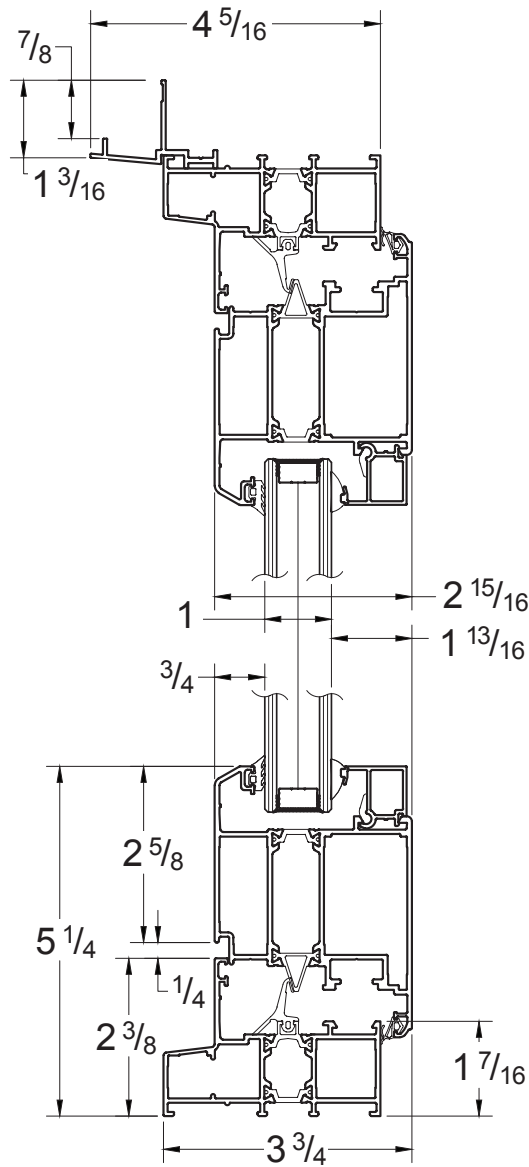
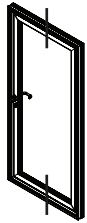
SINGLE DOOR - NAIL FIN



INSWING

STANDARD SILL

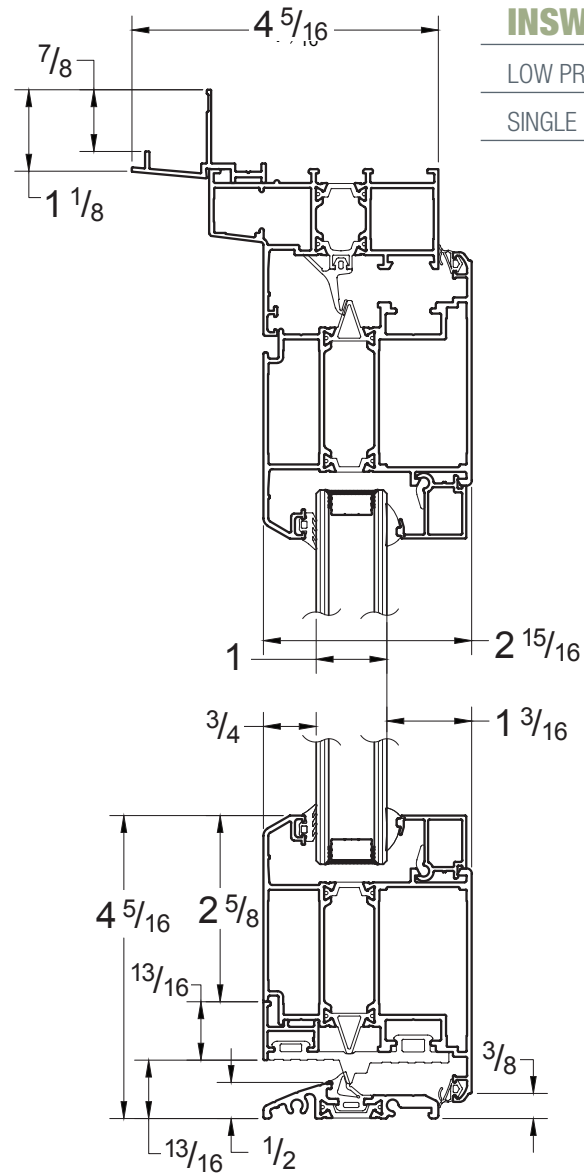
SINGLE DOOR - NAIL FIN



INSWING

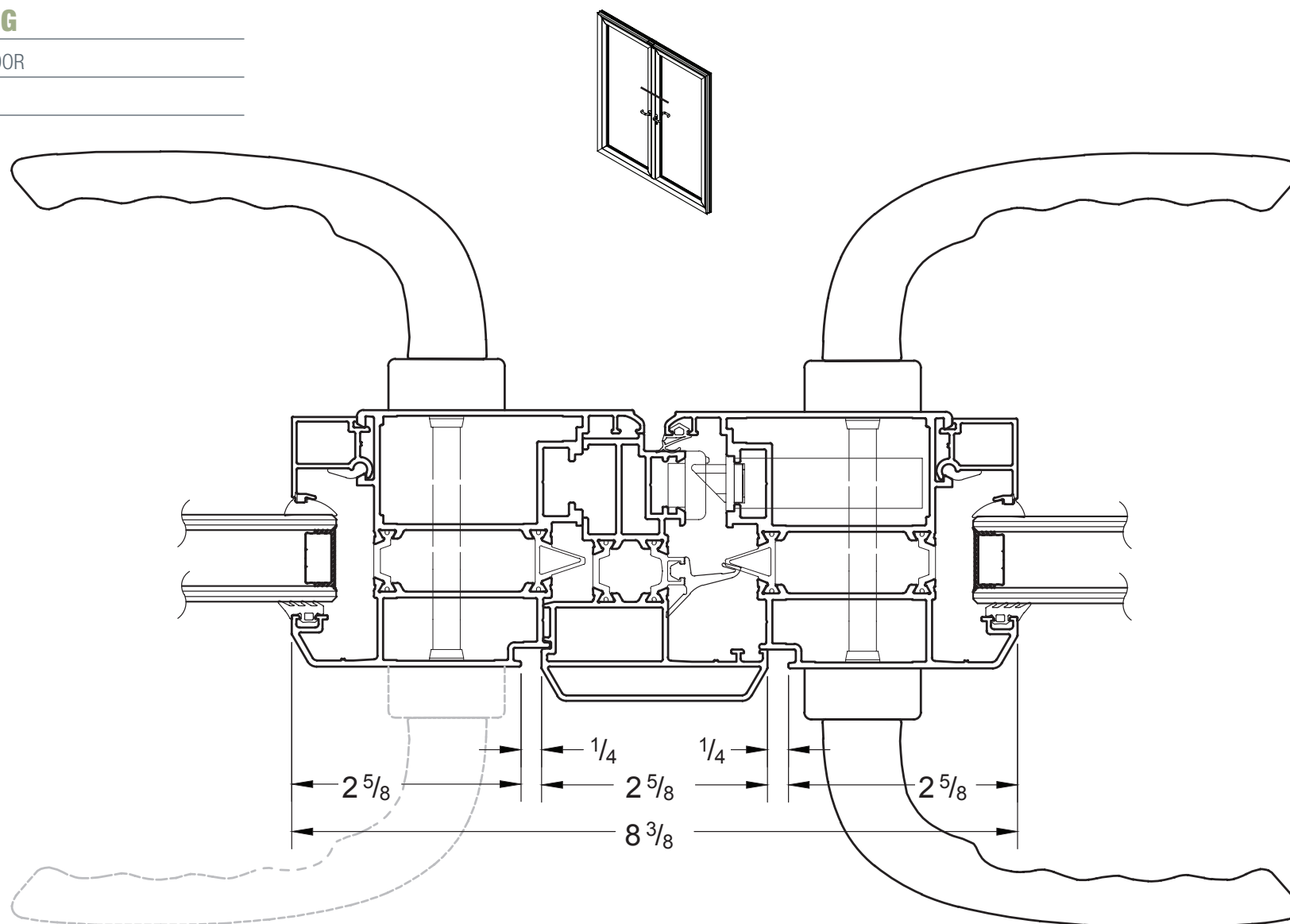
LOW PROFILE SILL

SINGLE DOOR - NAIL FIN



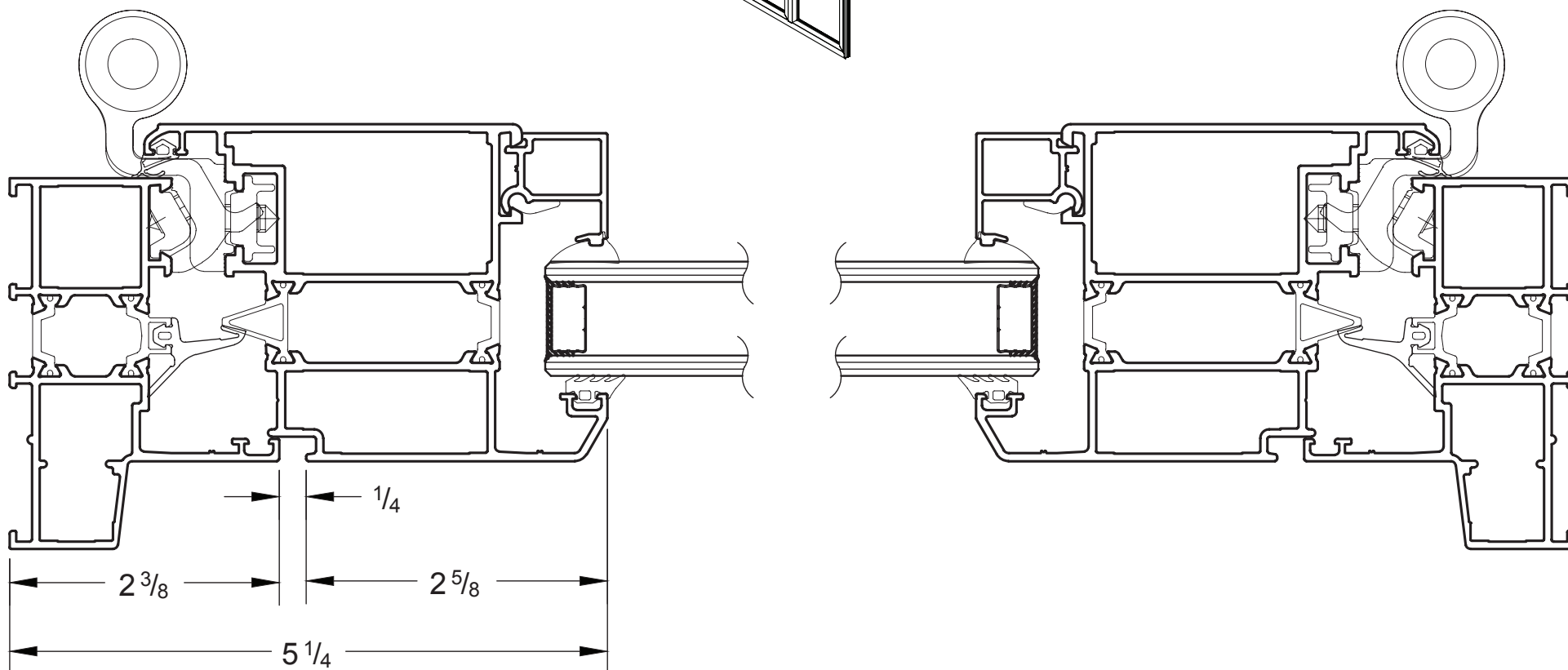
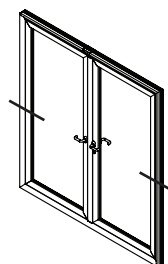
INSWING

DOUBLE DOOR



INSWING

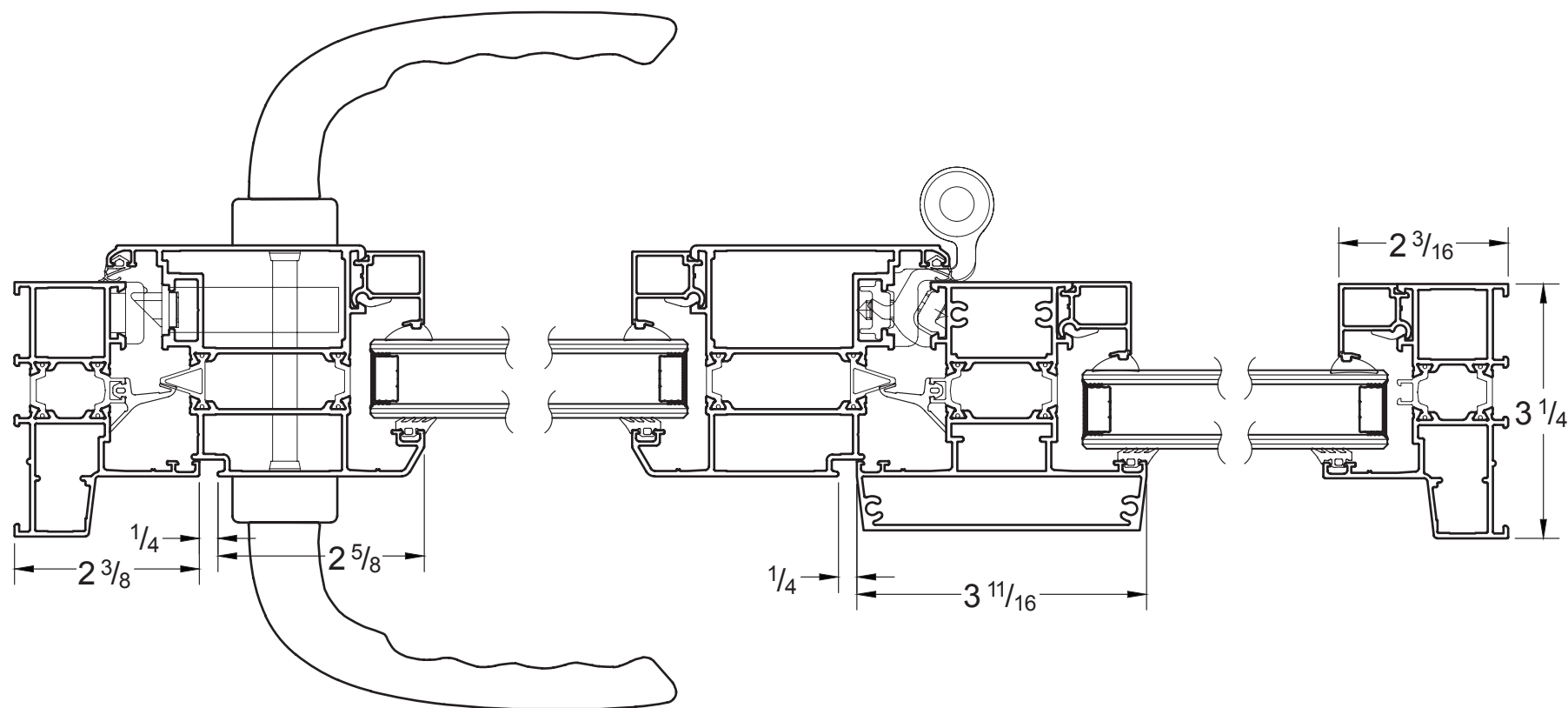
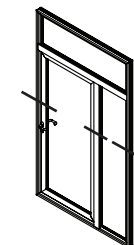
DOUBLE DOOR - BLOCK FRAME



INSWING

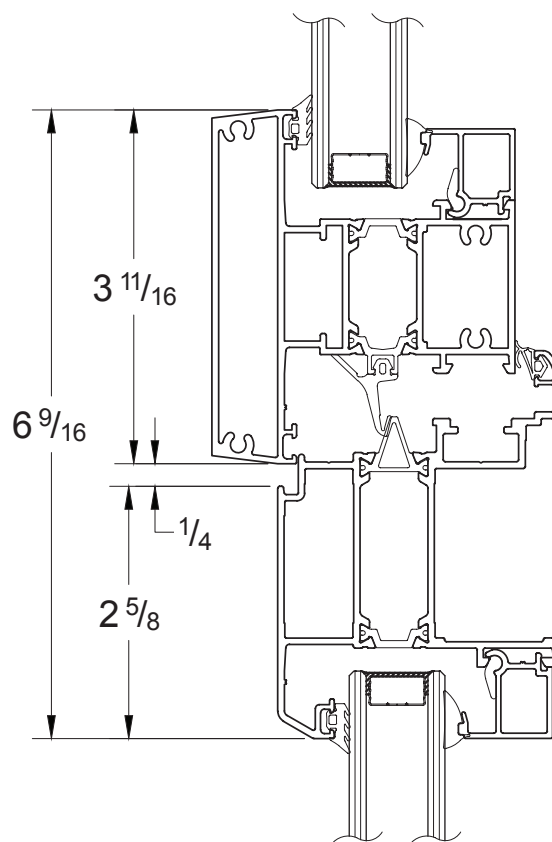
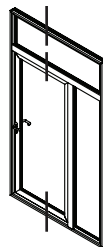
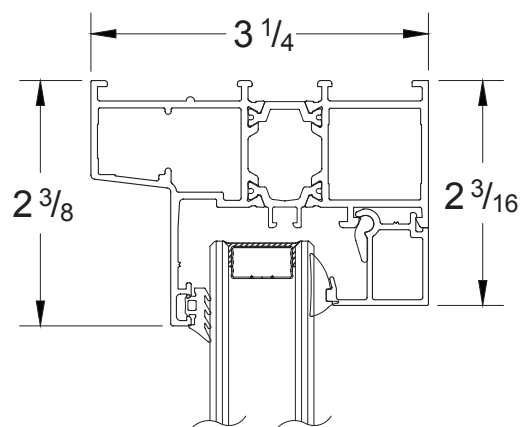
SINGLE DOOR WITH SIDELIGHT

& TRANSOM - BLOCK FRAME



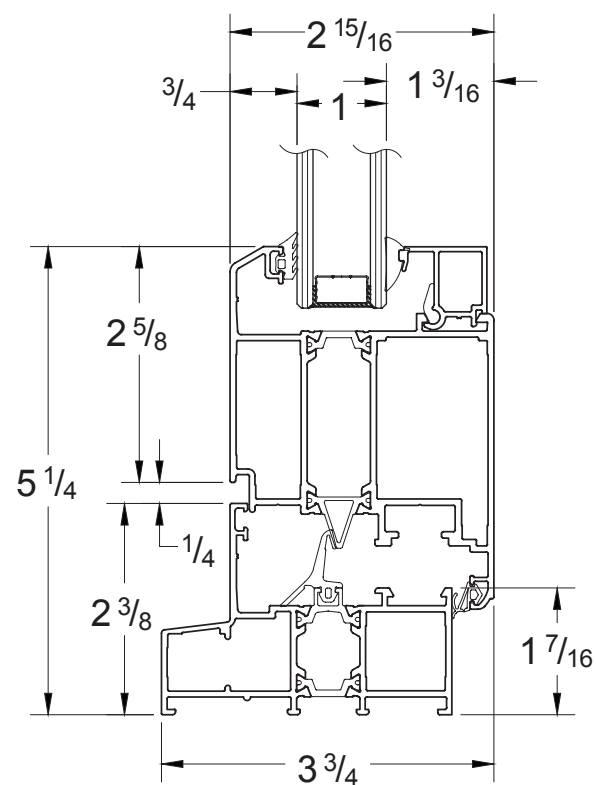
INSWING

SINGLE DOOR SIDELIGHT / TRANSOM



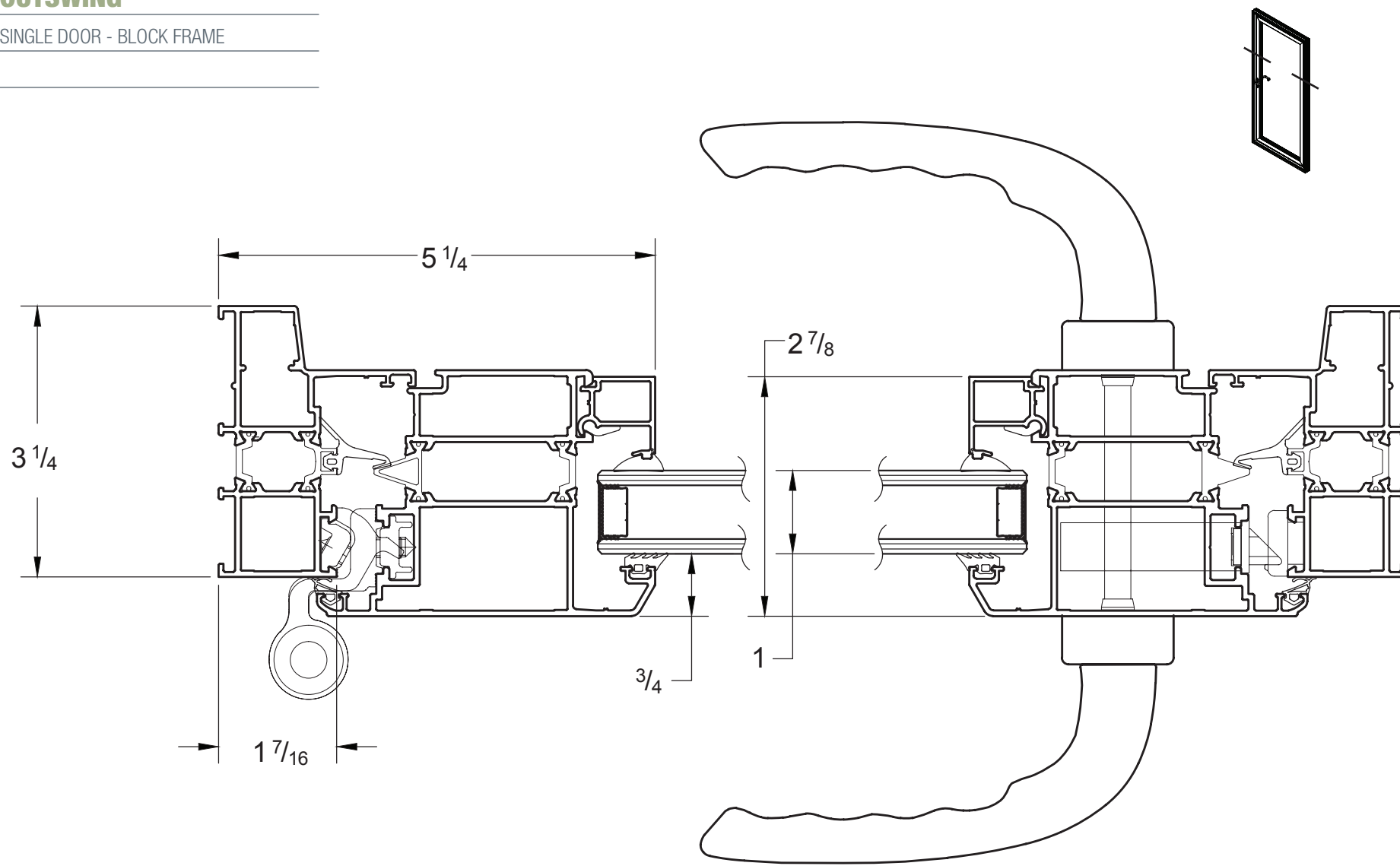
INSWING

SINGLE DOOR WITH SIDELIGHT &
TRANSOM | STANDARD SILL



OUTSWING

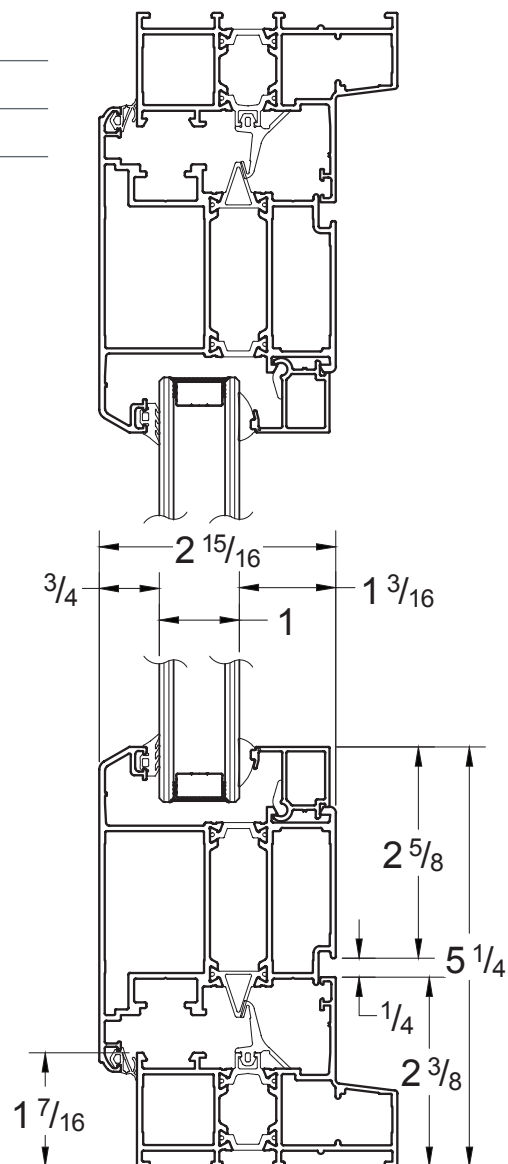
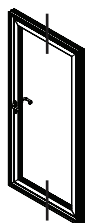
SINGLE DOOR - BLOCK FRAME



OUTSWING

STANDARD SILL - BLOCK FRAME

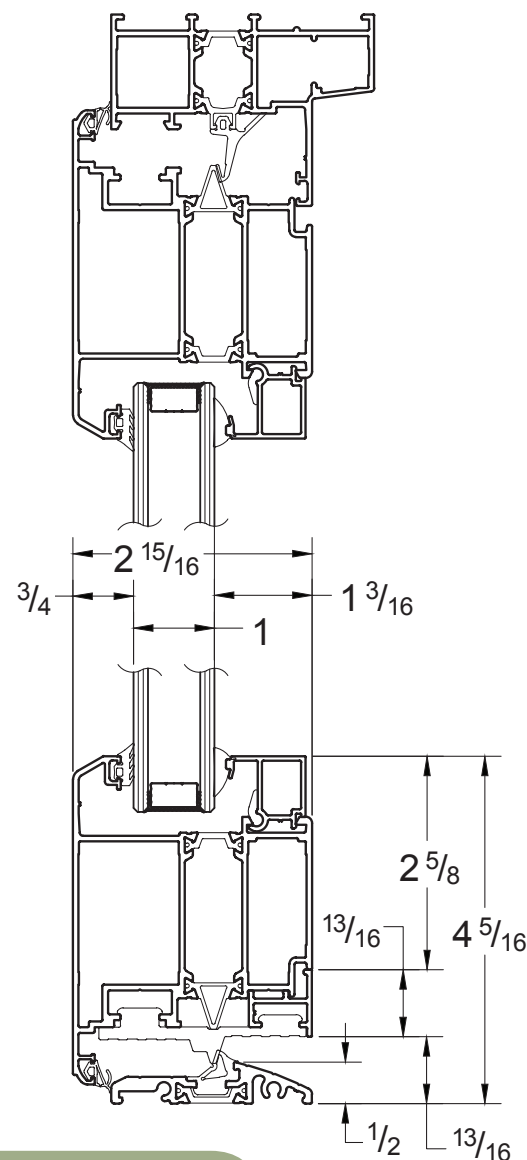
SINGLE DOOR



OUTSWING

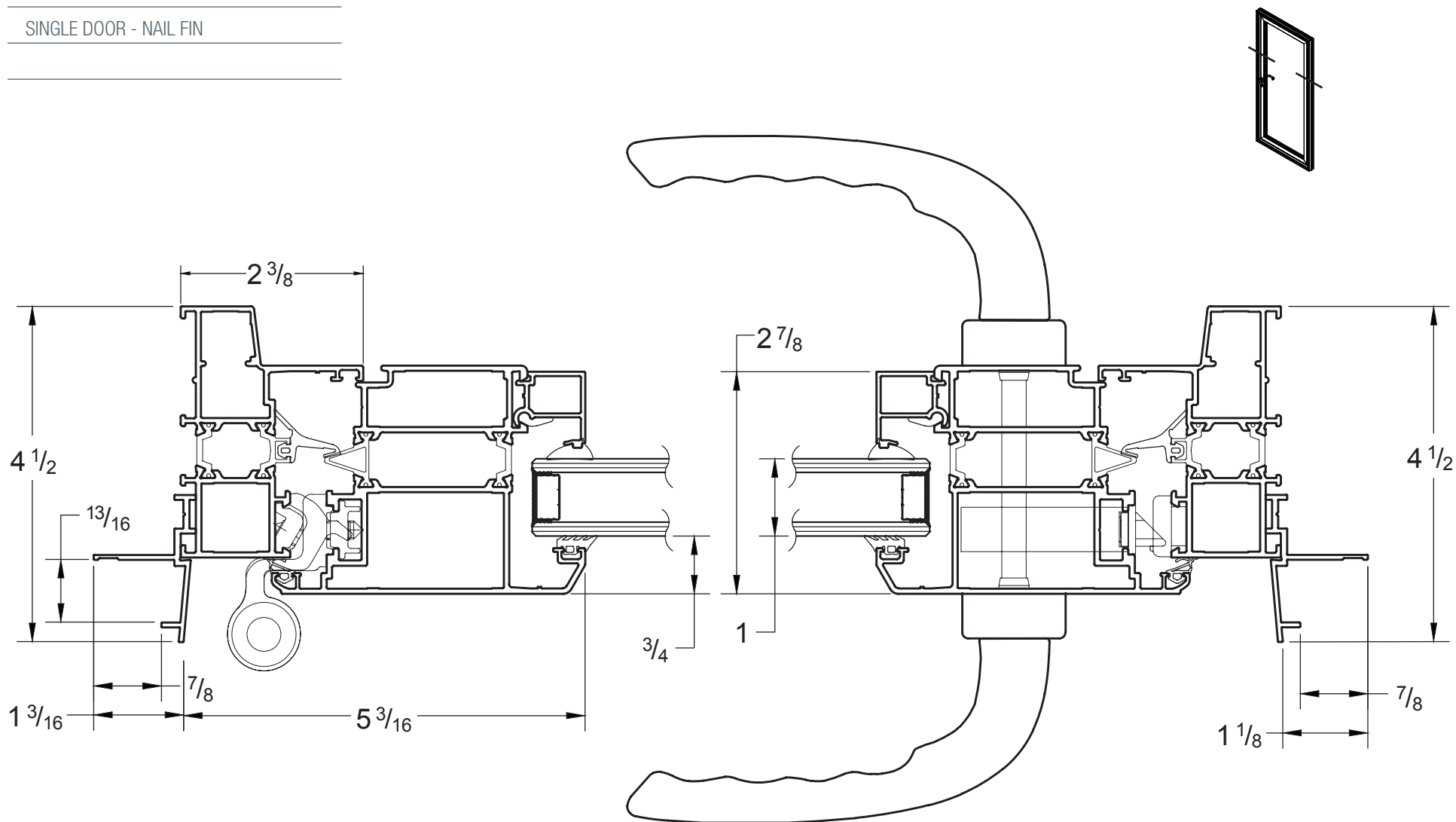
LOW PROFILE SILL - BLOCK FRAME

SINGLE DOOR



OUTSWING

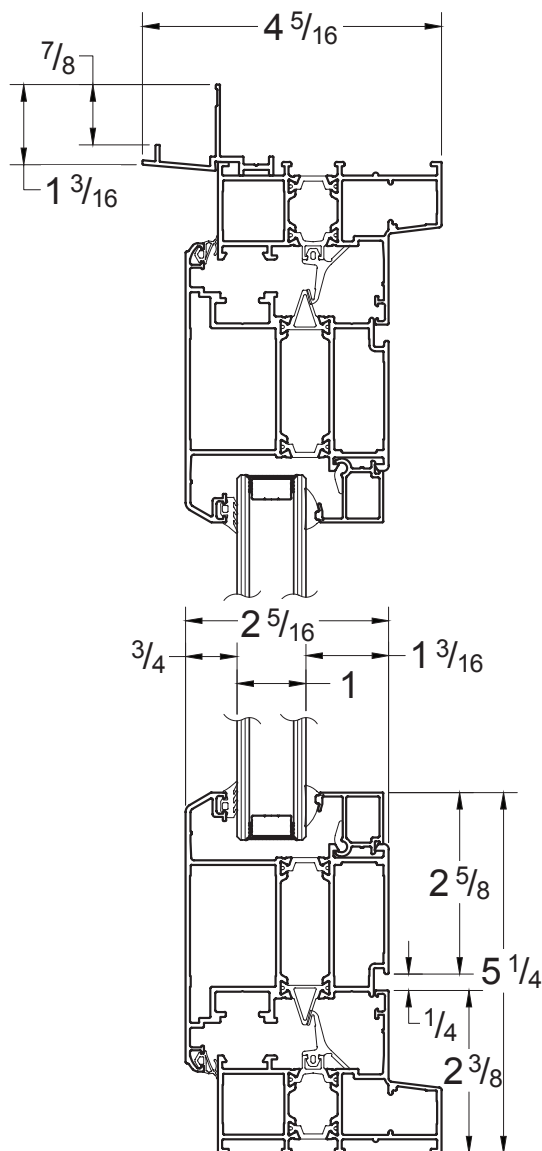
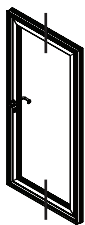
SINGLE DOOR - NAIL FIN



OUTSWING

STANDARD SILL

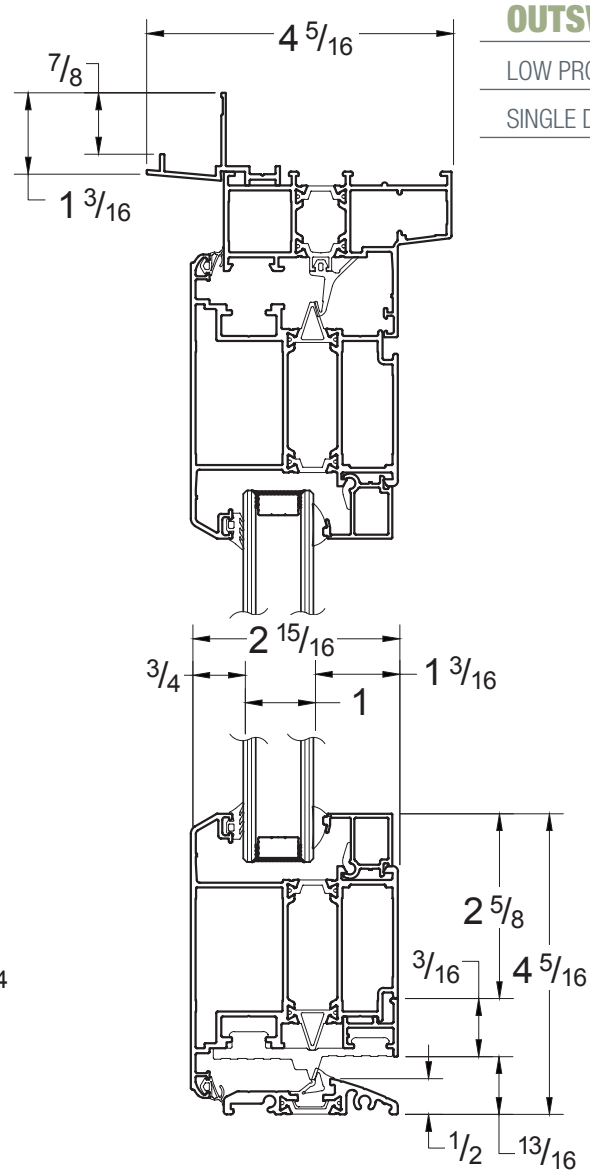
SINGLE DOOR - NAIL FIN



OUTSWING

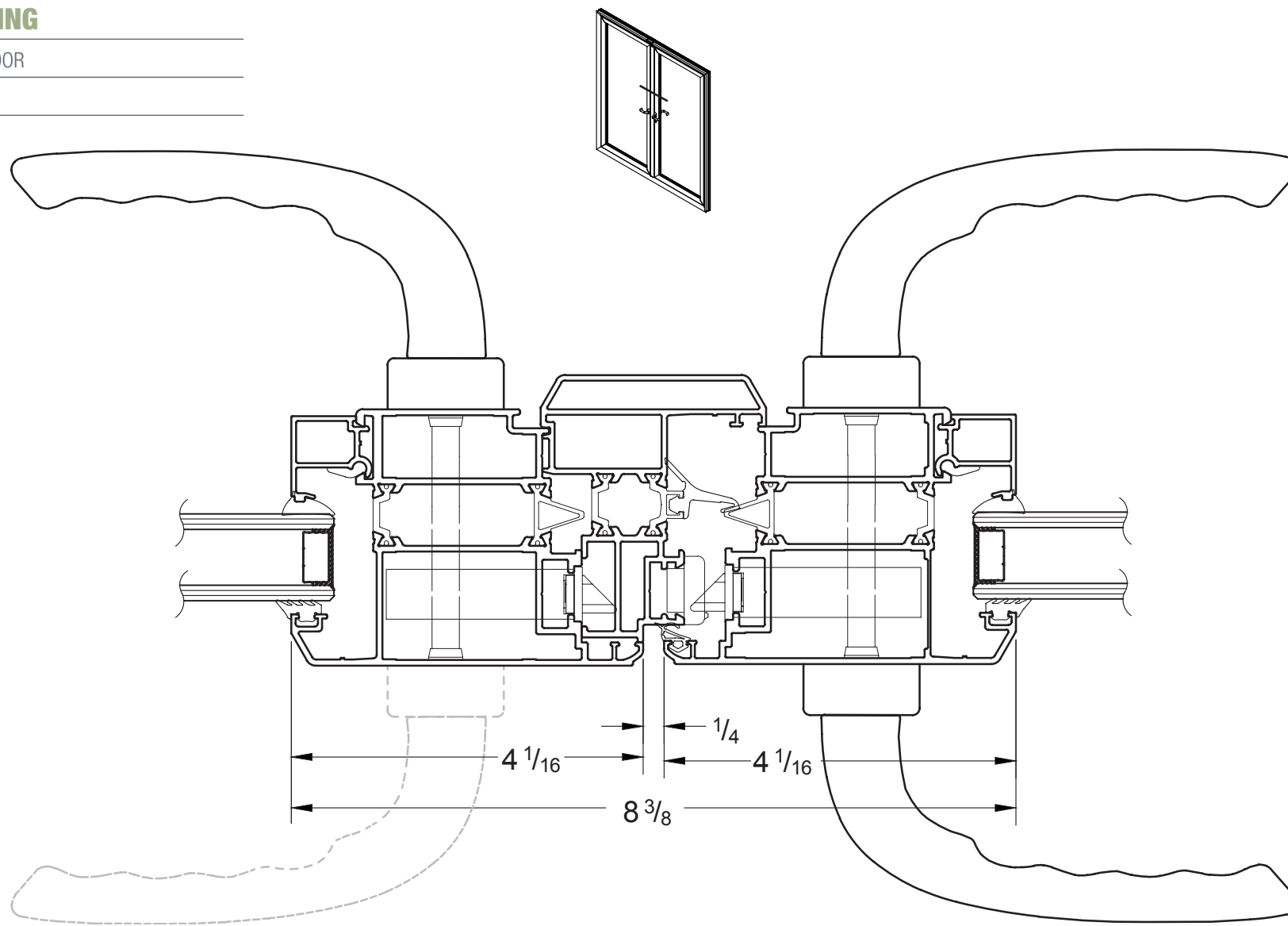
LOW PROFILE SILL

SINGLE DOOR - NAIL FIN



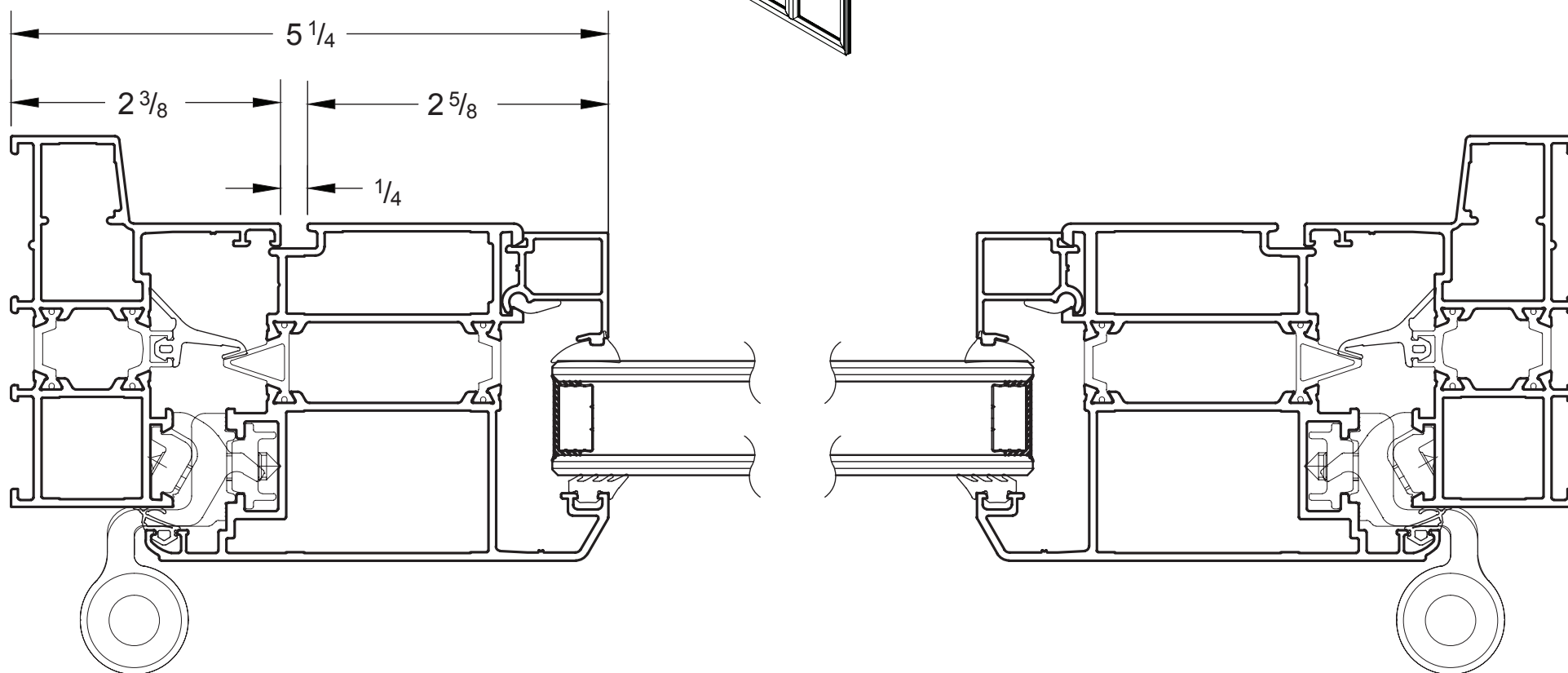
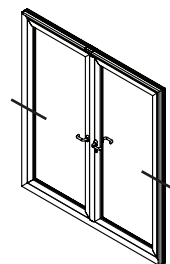
OUTSWING

DOUBLE DOOR



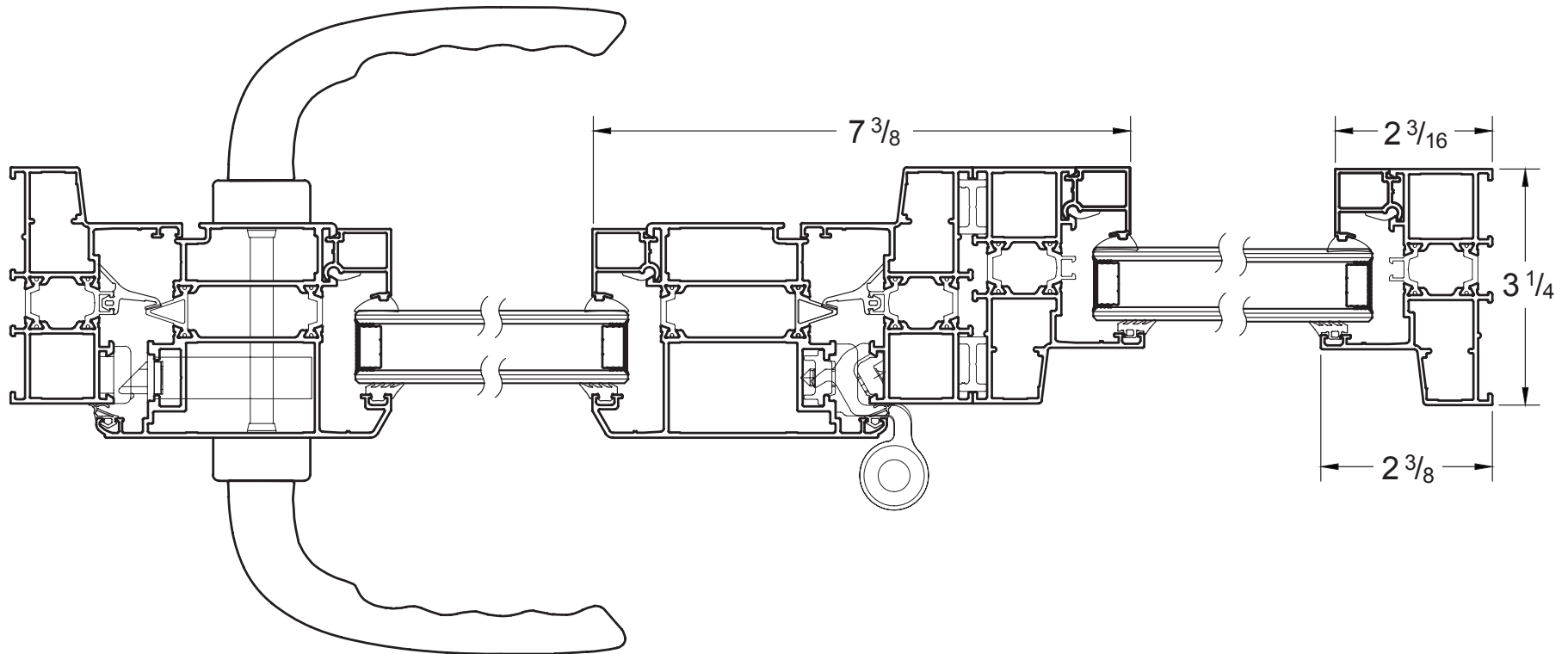
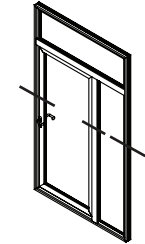
OUTSWING

DOUBLE DOOR - BLOCK FRAME



OUTSWING

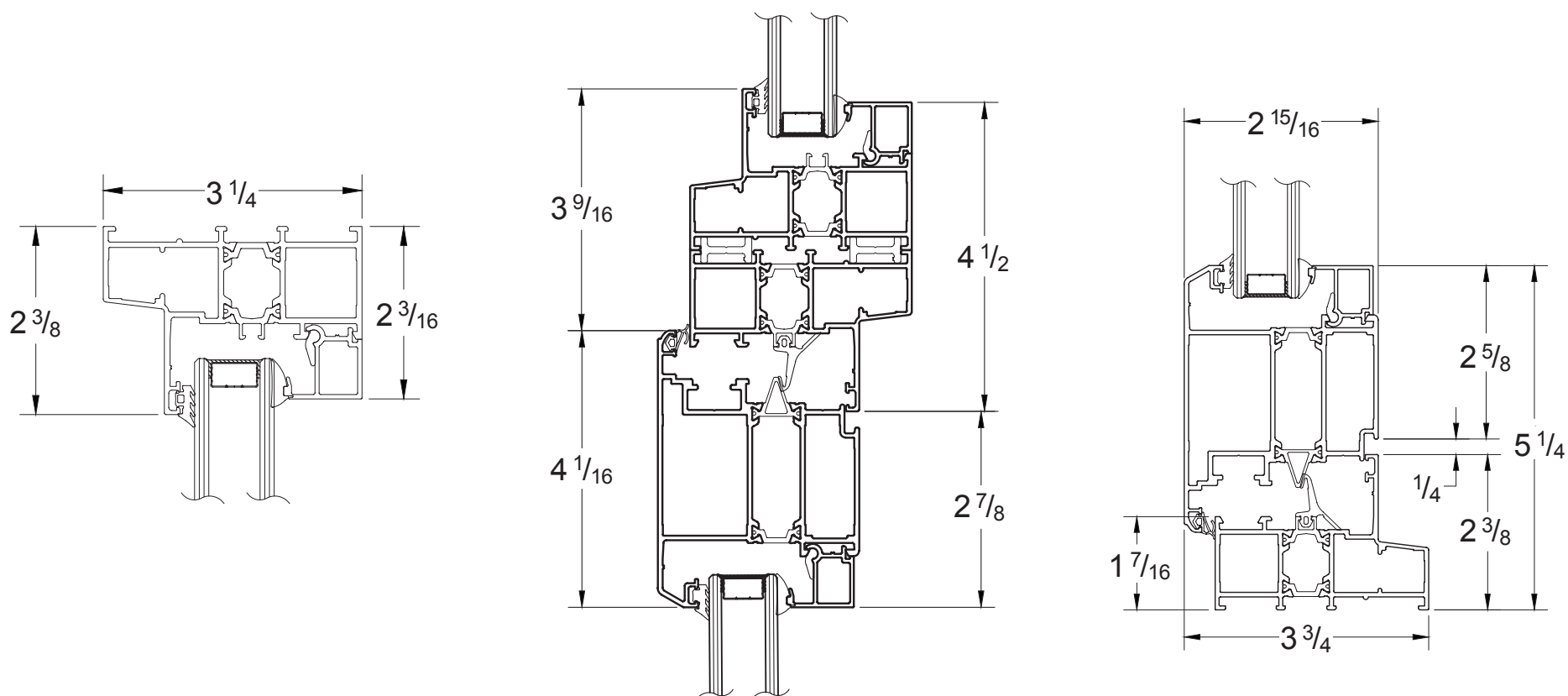
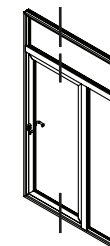
SINGLE DOOR WITH SIDELIGHT
& TRANSOM - BLOCK FRAME



OUTSWING

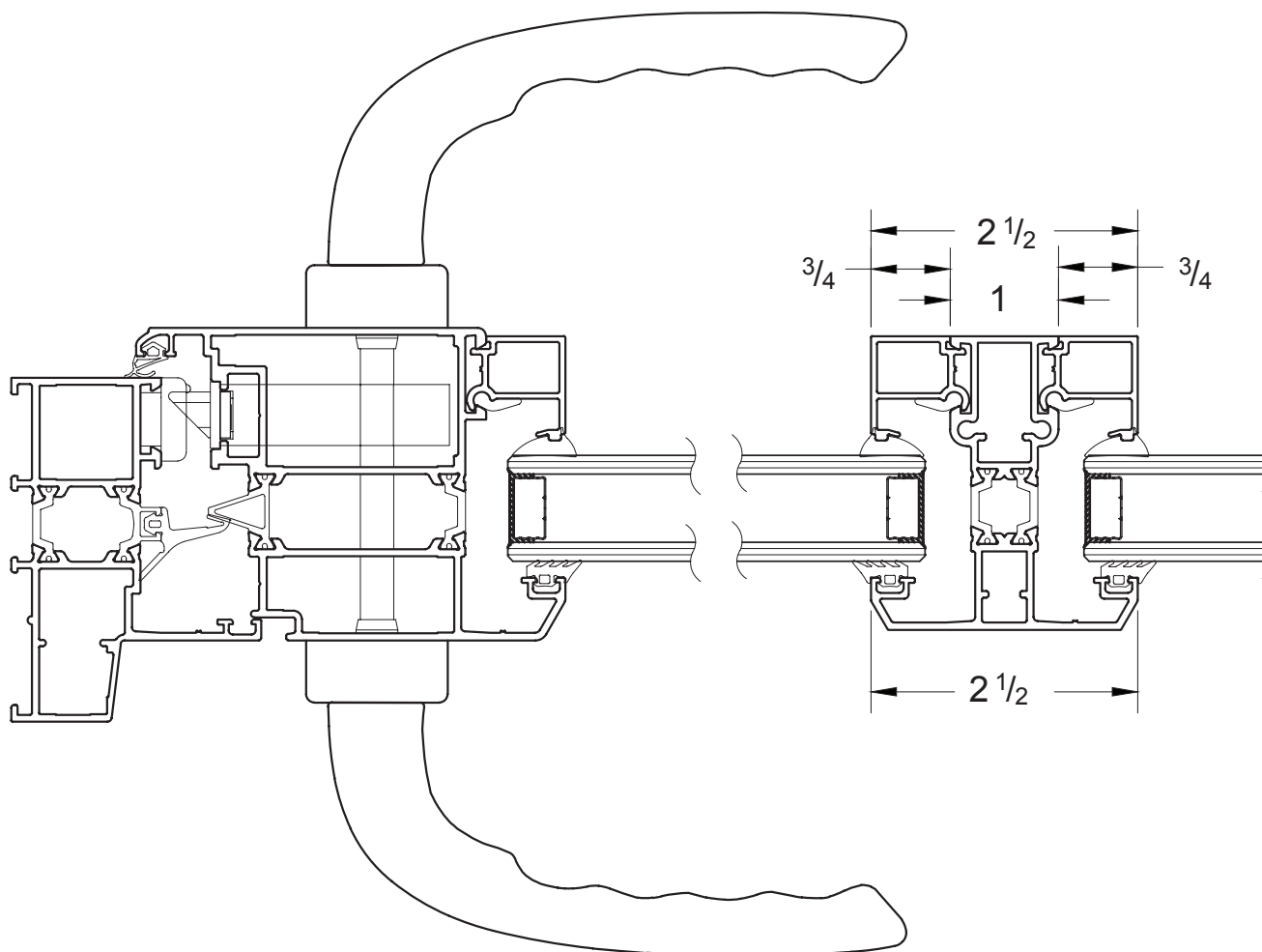
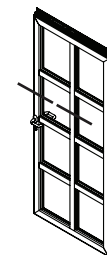
SINGLE DOOR WITH SIDELIGHT &

TRANSOM | STANDARD SILL



OUTSWING / INSWING

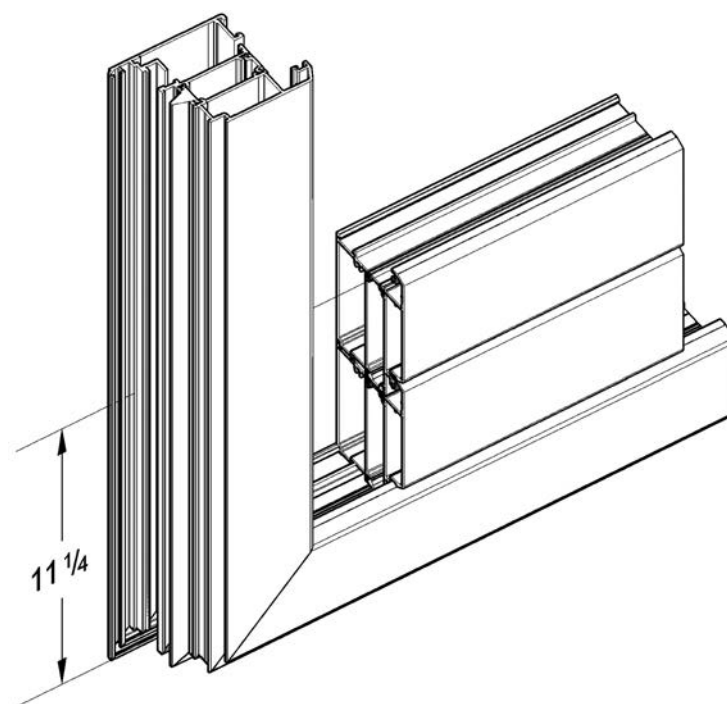
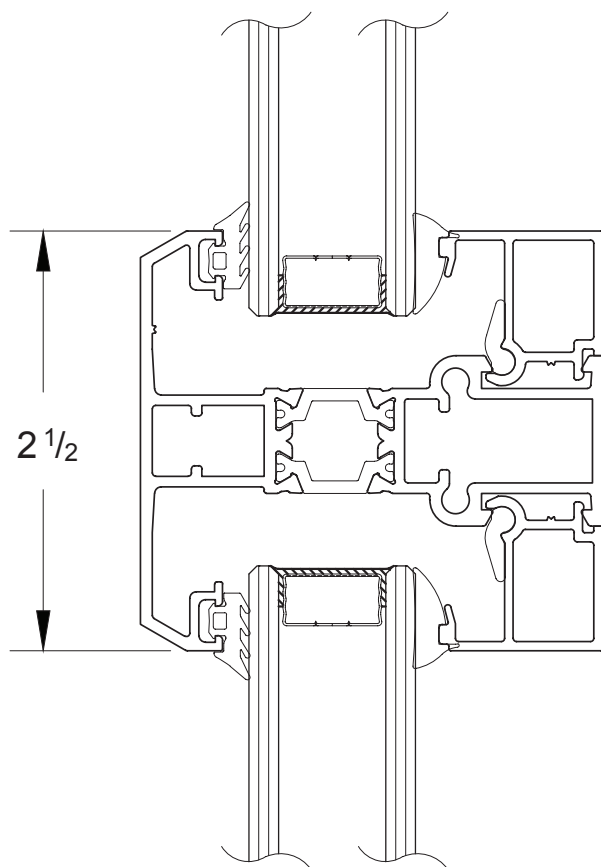
TDL



OUTSWING / INSWING

TDL

11 1/4" KICK PLATE



TOKYO HANDLE

